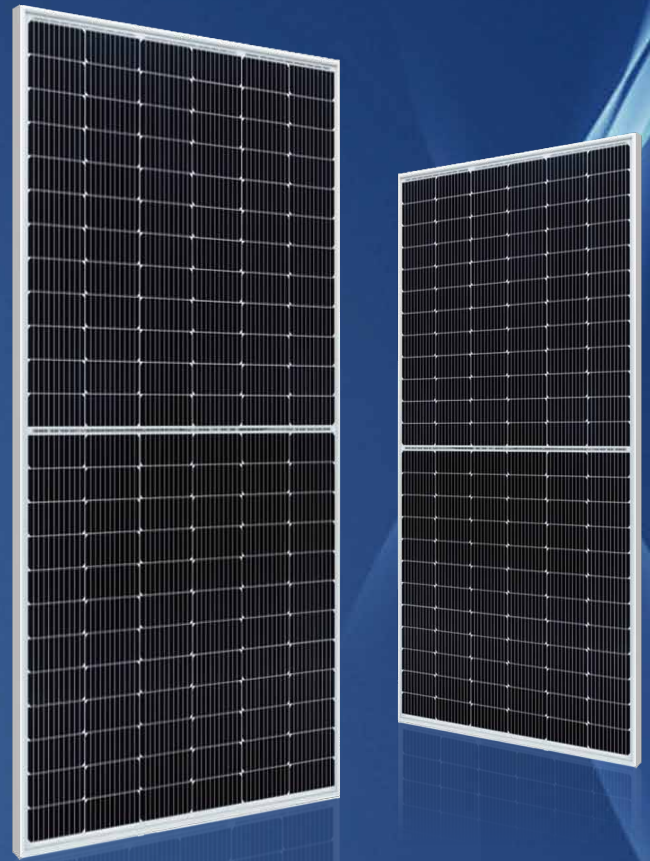


ELiTe PLUS

PV Module

ET-M672BH520-550WW/WB



Higher Module Efficiency

Brings 5-10W power gain due to half-cut production system



More Energy Yield

Lower NMOT and better temperature coefficient by lower cell series resistance, helps boost energy yield



Lower Operating Temperature, More Reliable

Lower operating temperature and hot spot temperature during the sunny day, making the module prevail during the sunny days



Better Shading Tolerance

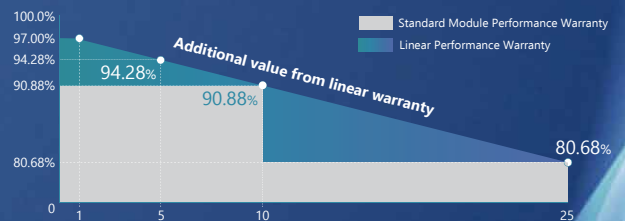
Thanks to Paralleling circuit design, more power generated under shading condition and during morning & evening time



Better Micro Crack Resistance

Minimize the impact by micro crack by limiting cell damage and potentially extending area by half-cut module architecture

LINEAR PERFORMANCE WARRANTY



25 25-years Linear Performance Warranty

15 15-years Product Material & Workmanship



M/ET-PD-EN-EU2019V4
ET Solar New Energy Co.,Ltd

ELECTRICAL SPECIFICATIONS (STC)

Model Type	ET-M672BH520WW/WB	ET-M672BH530WW/WB	ET-M672BH540WW/WB	ET-M672BH550WW/WB
Peak Power (Pmax)	520W	530W	540W	550W
Module Efficiency	20.12%	20.51%	20.89%	21.28%
Maximum Power Voltage (Vmp)	40.44V	40.54V	40.71V	40.83V
Maximum Power Current (Imp)	12.86A	13.08A	13.27A	13.48A
Open Circuit Voltage (Voc)±3%	49.10V	49.26V	49.42V	49.60V
Short Circuit Current (Isc)±3%	13.57A	13.71A	13.85A	14.04A
Power Tolerance	(0,+5W)			
Operating Temperature	-40~+85 °C			
Maximum System Voltage	1500V			
Nominal Operating Cell Temperature	45±2 °C			
Fire Safety	Class C			
Maximum Series Fuse Rating	25A			

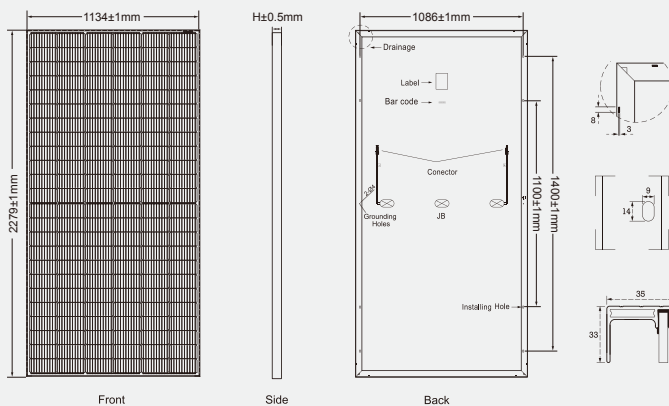
ELECTRICAL SPECIFICATIONS (NOCT)

Model Type	ET-M672BH520WW/WB	ET-M672BH530WW/WB	ET-M672BH540WW/WB	ET-M672BH550WW/WB
Peak Power (Pmax)	387W	394W	402W	410W
Maximum Power Voltage (Vmp)	37.54V	37.86V	38.11V	38.25V
Maximum Power Current (Imp)	10.32A	10.41A	10.56A	10.73A
Open Circuit Voltage (Voc)	46.34V	46.50V	46.65V	46.82V
Short Circuit Current (Isc)	10.96A	11.07A	11.19A	11.35A

MECHANICAL SPECIFICATIONS

Cell Type	PERC Monocrystalline 182x91mm
Number of Cells	144pcs(2x(6x12))
Weight	28.9kg
Dimension	2279 x 1134 x 35mm
Front Cover	3.2mm Tempered Glass
Frame	Anodized Aluminium Alloy
Junction Box	IP67
Cable Type	4mm ²
Length of Cable	(+): 300mm, (-): 300mm or Customized Length
Connector	MC4 Compatible
Origin	China

PHYSICAL CHARACTERISTICS Unit:mm (inch)



TEMPERATURE COEFFICIENT

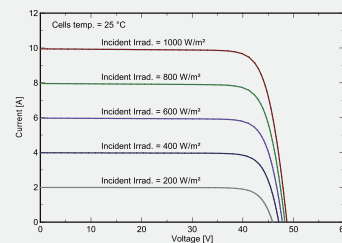
Temp. Coeff. of Isc (TK Isc)	0.048%/°C
Temp. Coeff. of Voc (TK Voc)	-0.28%/°C
Temp. Coeff. of Pmax (TK Pmax)	-0.35%/°C

PACKING MANNER

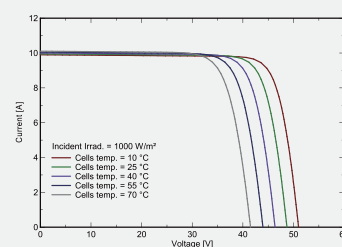
Container	40' HQ
Piece/Pallet	31
Pallet/Container	20
Piece/Container	620

ELECTRICAL CHARACTERISTICS

Current-Voltage Curve under different irradiance



Current-Voltage Curve under different working temperatures



Note: the specifications are obtained under the Standard Test Conditions (STCs): 1000 W/m² solar irradiance, 1.5 Air Mass, and cell temperature of 25°C. The NOCT is obtained under the Test Conditions: 800 W/m², 20°C ambient temperature, 1m/s wind speed, AM 1.5 spectrum.